

## **Bridgend Community Safety Partnership**

Pen-y-bont ar Ogwr  
Mwy Diogel



**Safer Bridgend**

[www.saferbridgend.org.uk](http://www.saferbridgend.org.uk)

## **Community Safety Strategy**

***‘Supporting Communities in Bridgend County to Be Safe  
and Cohesive’***



## **Background**

The Bridgend Community Safety Partnership (CSP) was established in response to the Crime and Disorder Act 1998.

The partnership has a statutory responsibility to undertake annual reviews of crime and disorder in the County. The review then helps partners understand the nature of crime, anti-social behaviour and substance misuse in the area and develop a community safety strategy which details the actions that need to be taken to reduce these problems and identifies the resources required to make the actions effective.

Following the implementation of the Wellbeing of Future Generations Act 2015, the decision was taken by Bridgend Public Services Board (PSB) to embed the activities of the Bridgend CSP into its own assessment and planning activities and by making it a sub board of the PSB.

**Supporting Communities in Bridgend to be safe and cohesive** is included in the [Bridgend Wellbeing Plan](#) and is the overarching objective for Bridgend CSP.

### **CSP Statutory Members:**

Bridgend County Borough Council

South Wales Police

ABMU Health Board

National Probation Service

Wales Community Rehabilitation Company

South Wales Fire and Rescue Service

Western Bay Youth Justice and Early Intervention Service

### **CSP other members**

Police and Crime Commissioner

Elected member for Community Safety

Western Bay Safeguarding Board

Public Health Wales

Registered Social Landlords

Department of Work and Pensions

Bridgend Association of Voluntary Organisations

Western Bay Planning Board

Western Bay Community Cohesion

## **Strategic Assessment of Local Need**

Bridgend CSP used a number of sources to establish evidence of local needs

### [Bridgend Assessment of Wellbeing](#)

#### **Key findings include:**

- Overall decrease in the incidences of crime and anti-social behaviour.
- Increase in the number of reported incidences of sexual offences and domestic violence.
- More than 8 in every 10 residents have a feeling of belonging to the local area, but more than a quarter worry that people from different backgrounds do not get on well together.
- Financial security is a key pressure for those on low incomes, on low paid temporary contracts, or unemployed.
- People say they are concerned about the lack of employment opportunities locally for young people.

The Bridgend assessment of wellbeing also identified a number of challenges affecting Bridgend County now and in the future.

- An increase in population will mean a larger, more diverse and older population which will bring challenges for health and social care, housing, community resilience, age friendly communities and social isolation.
- One in four adults in Wales are likely to experience mental ill health.
- Economic changes including the ability to meet the changing skills needs of the people of Bridgend.
- Further reforms to the Welfare System
- Climate change including air quality and risk from flooding.

### [Western Bay Population Needs Assessment](#)

Following the introduction of the Social Services and Wellbeing Act a joint population needs assessment was carried out by the 3 local authorities and the local health board. Violence Against Women, Domestic Abuse and Sexual Abuse is a key theme of the assessment.

### [Public Health Wales Adverse Childhood Experiences](#)

Bridgend CSP recognise the impact Adverse Childhood Experiences have on health and wellbeing across the life course.

The CSP will use the quarterly Public Health Wales Violence Surveillance Report to monitor and respond to levels of violence within the county

## **Links to National and Regional Priorities and Plans**

### [South Wales Police and Crime Reduction Plan 2017 to 2021](#)

#### **Priorities**

- ✓ Reduce and prevent crime and anti-social behaviour to keep people safe and confident in their home and communities
- ✓ Improve the way we connect with, involve and inform our communities
- ✓ Work to protect the most vulnerable in our communities
- ✓ Make sure that the local criminal justice system works effectively and efficiently, meeting the needs of victims and challenging offenders
- ✓ Make our contribution to the strategic policing requirement and successfully police major events
- ✓ Spend your money wisely to protect policing your community

### [Welsh Government's National Strategy on Violence against Women, Domestic Abuse and Sexual Violence 2016 - 2021](#)

#### **Objectives**

- ❖ Increase awareness and challenge attitudes of VAWDASV
- ❖ Increased awareness in children and young people of the importance of safe, equal and health relationships and that abusive behaviour is always wrong
- ❖ Increased focus on holding perpetrators to account and provide opportunities to changes their behaviour based around victim safety
- ❖ Make early intervention and prevention a priority
- ❖ Relevant professionals are trained to provide timely and appropriate responses to victims
- ❖ Provide victims with equal access to appropriate resources, high quality, needs led, strength based, gender responsive services
- ❖ Provide robust evidence to inform our work

### [National Assembly for Wales Suicide Prevention](#)

Bridgend PSB has developed a Suicide and Self Harm Prevention Strategy and has agreed that the Community Safety Partnership will take ownership of the strategy and measure progress.

### [Working together for Safer Communities](#)

- ❖ In December 2017 the Welsh Government published their review of Community Safety Partnership Working in Wales. The review identified a Vision for Community Safety

- ❖ Every community is strong, safe and confident in a manner that provides equality of opportunity and social justice, resilience and sustainability for all
- ❖ The shared responsibility of government, public and third sector agencies is to work together with the communities the service and the private sector to address activity or behaviour that is unlawful, anti-social, harmful to individuals and society and to the environment
- ❖ Sharing knowledge and ensuring early intervention with prompt, positive action tackles local issues and addresses vulnerabilities

This vision will be achieved through collaborative and integrated multi-agency activity that is:

- Evidence-based and intelligence-led
- Supported by appropriate skills and knowledge
- Sustainably resourced and locally appropriate
- Engaging and involving citizens
- Preventative and intervening as early as possible
- Focused on long-term improvements and benefit

### **Regionalisation**

Bridgend CSP will have to consider regionalisation when reviewing the Community Safety Strategy. The decision on the potential changes to the Health Board footprint will have a significant impact on the work of the partnership. Bridgend CSP will continue to work across the region to collaborate with health and other agencies.

## **Wellbeing Objective: Support communities in Bridgend County to be safe and cohesive.**



### **Why is this important?**

In Bridgend County the strength of our social wellbeing comes from our communities. In our assessment people in Bridgend County told us they feel that contact with neighbours, friends and family helps them live a full life and deal with life's challenges. They say they value the environment, culture and heritage of the area.

Attractive communities where people get on well with each other can reduce the prevalence of crime, violence, and anti-social behaviour; improve educational attainment, and support health and wellbeing. Being active in our communities offers us the opportunity to keep healthy, enjoy our environment, maintain social networks and embrace our culture and language. We know that in the future people will live in smaller households and that our communities will be more diverse. In consultation, citizens felt that it was particularly important to challenge discrimination in communities. The British Crime survey finds that in the UK disabled people have an increased risk of being victims of violence.

Although crime and anti-social behaviour rates are low in the Bridgend County and decreasing, people still believe that there is a problem. Most residents surveyed said they do not feel informed about what the police and others are doing to tackle local issues. In consultation, citizens felt that communities have an important role to play in addressing crime and antisocial behaviour. They would like to have more opportunities to talk about issues important to them and their communities freely.

We know that working together works. For example, since 2007-08, the number of young people offending for the first time has decreased and this is largely due to partner agencies working together with young people to provide early interventions. The risk factors for youth offending and substance misuse within the family, community, school overlap to a very large degree with those for educational underachievement, young parenthood, and adolescent mental health problems. Actions to prevent these risk factors therefore helps to prevent a range of negative outcomes for young people, families and communities now and in the future.

Whilst not as prevalent in Bridgend County as in some other areas, violence, substance misuse and in particular domestic violence have a devastating impact on individuals, their families and undermine confidence in communities, both geographical and other communities. Young people in our workshop were particularly concerned about substance misuse.

Our wellbeing assessment found that there has been an increase in reporting of sexual offences and domestic violence. Whilst this increased reporting may partly be due to increased trust in Police and other services it is still likely that many victims do not seek help. We see the link to adverse childhood experiences and want to prevent a cycle of such behaviour in future generations.

### **What will we do?**

#### **Our 10 year aim is for people living, working or visiting Bridgend County to feel safe and be safe**

We have defined two priority areas for this objective for the next five years.

##### **1. We will work together to create safe, confident communities and tackle crime, disorder and all aspects of anti-social behaviour**

We have seen the benefit that working together can have in preventing crime and we will use this experience to continue to change the way we work together to address future challenges in our communities.

#### **The steps we will take:**

- We will collect and analyse information, data and intelligence to focus on crime, in particular, violence and substance misuse and its impact on citizens and all kinds of communities.
- We will work with neighbouring local authorities to implement the **Violence against Women, Domestic Abuse & Sexual Violence Strategy**.
- We will use our understanding of how for some people childhood experiences affects offending behaviour to extend the way we work together to prevent reoffending.

#### **2018-2019**

The focus of this work for this year will include:

- ❖ Investigation of the causes of the increase of rough sleepers in Bridgend County and the support and prevention options available
- ❖ County Lines/organised crime and how to inform and support communities

##### **2. We will work together to improve community cohesion so that people in communities get on well together and differences are respected and tolerated**

We want to understand and address the things that damage a person's sense of security and belonging to their community. Whilst we have mechanisms in place to deal with those tensions that place communities at significant risk, we want to ensure that all local people benefit from the supportive communities that our citizens are so proud of.

### The steps we will take:

- We will work with all members of our communities, in particular equality groups such as disabled people and the LGBT community, to better understand what causes tensions.
- We will use this learning to ensure there are communication and other mechanisms in place so that communities feel informed and we can identify and address issues and prevent escalation.
- We will work with communities to help them improve the local environment and increase opportunities to come together to promote a sense of ownership and security.

### 2018 – 2019

The focus of the work for this year will include:

- ❖ Improved Community engagement through the Community Engagement Toolkit developed by South Wales Police
- ❖ Prevention of vulnerable groups being the target of fraud

### Meeting this well-being objective will contribute to the well-being goals as described below:

✓ A Prosperous Wales	Improve future outcomes for young people including educational attainment, cohesive safe communities are more attractive and easier places to do business.
✓ A Resilient Wales	Communities place a greater value on their environment and more people get involved in local issues and recognise the importance of green space in wellbeing and as a prevention factor.
✓ A Healthier Wales	Reduction in substance misuse. Promotes more involvement in communities to benefit mental health, social and physical activity.
✓ A More Equal Wales	Recognising that communities are becoming more diverse. Addressing barriers that some groups have in feeling part of communities.
✓ A Wales of Cohesive Communities	Primary aim of this objective.
✓ A Wales of Vibrant Culture and Thriving Welsh Language	Importance of culture and language as a focus for communities coming together. Bringing more people from different cultures together. More people identifying with their community.
✓ A Globally Responsible Wales	Diverse, confident communities are resilient to change. Promotes a better knowledge of different cultures and a better knowledge of the local environment.



## How are these steps linked to the other objectives in the Bridgend Well Being Plan?

- By working with young people at risk of entering the youth justice system, or young offenders we will promote better achievement at school and better prospects for employment, improved relationships within families and communities, and healthier lifestyles.
- Being within a supportive community is a protective factor for young people who have experienced ACEs, but also help adults deal with challenges throughout their lives be that ill health, becoming unemployed, losing a partner in older age, becoming a parent, or changing gender.
- Our green spaces, heritage buildings, Welsh language and social and learning opportunities can provide a focus for community activity that develops and strengthens networks as well as protecting habitats and species and increasing Welsh language speakers.
- Preventing violence against women, domestic violence and substance misuse will lessen the ACEs young children are subject to, the impact of which may be played out in communities and in the workplace in later life.

## How will we measure success?

Priority	Measures for success
<b>We work together to create safe, confident communities and tackle crime, disorder and all aspects of anti-social behaviour</b>	Percentage of people feeling safe at home, walking in the local area and when travelling  First time entrants to the criminal justice system  Offences per 1000 population
<b>We will work together to improve community cohesion so that people in communities get on well together and differences are respected and tolerated</b>	Percentage of people agreeing that they belong to the area; that people from different background get on well together; and that people treat each other with respect.  Percentage of people satisfied with local area as a place to live.  People who feel they can influence decisions in their local area

## Links to Local and Regional Partnerships and Governance Arrangements

The objectives, priorities and steps the Bridgend Community Safety Partnership will take to support safe and cohesive communities in Bridgend County is firmly embedded in the Bridgend Wellbeing Plan.

The CSP is committed to the sustainable development principle and the 5 ways of working enshrined in the Wellbeing of Future Generations Act 2015 and will

- Think about the long term
- Look to prevent problems
- Work towards the Act's seven wellbeing goals in all that they do
- Work with each other and others
- Work with people and communities, by involving them

<b>A Prosperous Wales</b>	<b>A Resilient Wales</b>	<b>A Healthier Wales</b>	<b>A More Equal Wales</b>	<b>A Wales of Cohesive Communities</b>	<b>A Wales of Vibrant Culture and Thriving Welsh Language</b>	<b>A Globally Responsible Wales</b>
---------------------------	--------------------------	--------------------------	---------------------------	--	---	-------------------------------------

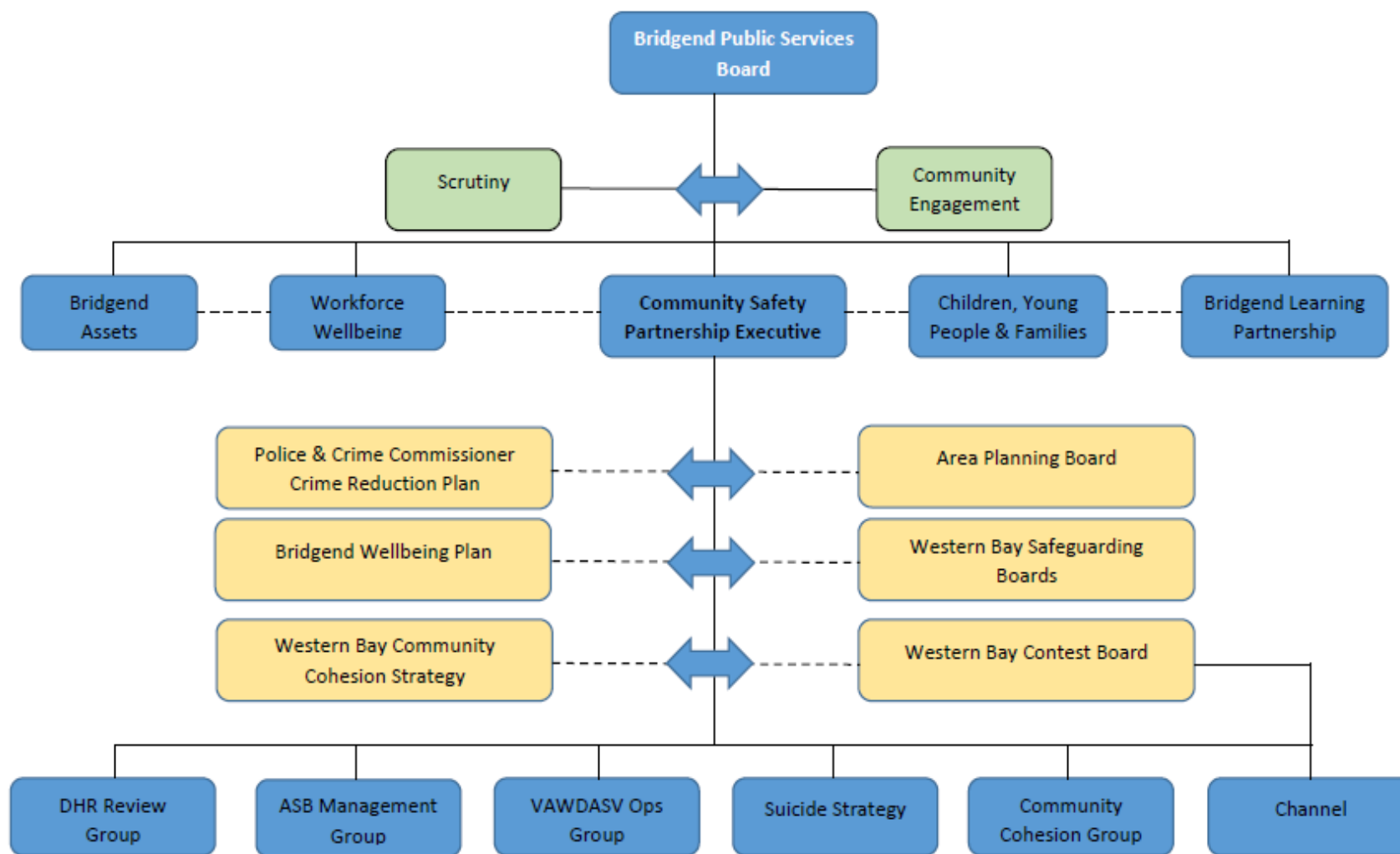
The partnership will continue to work closely with related local and regional partnerships including but not limited to:

- Community Cohesion (Regional and Local)
- Channel Panel (Local)
- Prevent: Protect and Prepare (Local)
- Contest (Regional)
- Western Bay Safeguarding Boards (Regional)
- Public Protection Executive Board (Local)
- Children, Young People and Families Board (Local)
- Bridgend Assets Group (Local)
- VAWDASV Operational Group (Local)

### Reporting Arrangements

The CSP will report to Bridgend PSB on progress towards the Wellbeing Objective – supporting communities in Bridgend to be safe and cohesive at least twice a year

The CSP will report to the PSB Scrutiny Panel at least twice a year.



**Bridgend Community Safety Partnership Governance**

## Bridgend Community Safety Partnership Delivery Plan 2018/19

Wellbeing Objective	Support Communities in Bridgend to be safe and cohesive
---------------------	---

Priority	Step	Actions	Lead Partner	By When	Reporting Officer
<b><i>We will work together to create safe, confident communities and tackle crime, disorder and all aspects of anti-social behaviour</i></b>	We will collect and analyse information, data and intelligence to focus on crime, in particular, violence and substance misuse and its impact on citizens and all kinds of communities	Use the PHW Violence Surveillance Reports to map and profile communities and that experience assault but do not report to the police.	PCC/PHW	Ongoing and reported at each Bridgend CSP	Dan Jones
		Provide annual set of data specifically for the Bridgend Area	PCC	Annually	Dan Jones
		Improve quality of data collection in Princess Of Wales ED	PCC	Ongoing	Dan Jones
		Use that information to target joint events to promote awareness and	CSP	30 events held by 31 March 2018	Judith Jones

Priority	Step	Actions	Lead Partner	By When	Reporting Officer
		target intervention and prevention			
		Raise awareness of Serious Violent Crime including County Lines to all partners and front line staff through:			
		1. Development of 'vulnerability to serious crime' training programme for partner staff	CSP/BCBC	Training programme developed by November 2018	TBC
		2. Safeguarding learning event linked to domestic homicide	BCBC/SWP	9 October 2018	Bethan Lindsay Gaylard/Phil Sparrow
		Work with BCBC education dept and schools to better understand how to raise awareness of serious violence crime including	BCBC	March 2018	J Jones/Lindsay Harvey Dan Jones

Priority	Step	Actions	Lead Partner	By When	Reporting Officer
		dangers of knife crime to young people			
		Use local data to better understand the needs of rough sleepers	CSP		Jo Ginn/Judith Jones
		Undertake qualitative survey of potential ASB in Bridgend Bus Station and surrounding areas	CSP	24 July to 6 August and w/c 24 September 2018	Judith Jones
	We will work with neighbouring local authorities to implement the <a href="#">Bridgend Violence against Women, Domestic Abuse &amp; Sexual Violence Strategy</a>	<a href="#">Bridgend Violence against Women, Domestic Abuse &amp; Sexual Violence Strategy</a>	BCBC	(See Strategy)	Bethan Lindsay Gaylard
<b><i>We will work together to improve</i></b>	We will work with all members of our	Use Mosaic and other data to identify the most	SWP	Ongoing	C Griffiths

Priority	Step	Actions	Lead Partner	By When	Reporting Officer
<b><i>community cohesion so that people in communities get on well together and differences are respected and tolerated</i></b>	communities, in particular equality groups such as disabled people and the LGBT community, to better understand what causes tensions	appropriate method of communication with diverse communities			
		Use Community Engagement activities outlined in Priority 1 step 1, to better understand the needs of vulnerable groups	CSP	Ongoing	Judith Jones
		Work with partners including 3 <sup>rd</sup> sector and faith organisations to co-ordinate the support available to rough sleepers develop a robust risk assessment system	CSP	September 2018  Event planned for 14 November as part of Inter-faith week	Jo Ginn/Judith Jones
		Explore the potential opportunities for day provision for rough sleepers	BCBC	September 2018 onwards	Jo Ginn/Martin Morgans

Priority	Step	Actions	Lead Partner	By When	Reporting Officer
		Work with Bridgend Bid and other partners to explore alternative methods of improving the town centre experience for residents and visitors	BCBC	December 2018  Town Centre update	Judith Jones/Mari-Wyn Jones
	We will use this learning to ensure there are communication and other mechanisms in place so that communities feel informed and we can identify and address issues and prevent escalation.	Establish an PSB/CSP information and engagement group to map activities and develop joint communication methods	Partnership Support Team	December 2018	Partnership Analyst
		Develop a more co-ordinated approach to partner engagement with schools through the Bridgend Head Teachers Forum	SWFRS		J Jones  TBC  BCBC Children's  On head teachers agenda for 13 February – presentation  tba



Priority	Step	Actions	Lead Partner	By When	Reporting Officer
	We will work with communities to help them improve the local environment and increase opportunities to come together to promote a sense of ownership and security	Work with Trading Standards and Public Protection and other partners to raise awareness of the risk a fraud to vulnerable to vulnerable people.	CSP	December 2018	Judith Jones
		Use the data and intelligence gained from the ASB survey in Bridgend Bus Station to develop diversionary activities	BCBC	December 2018	Judith Jones
		Implement the Bridgend Suicide Prevention Strategy	SWP/PHW	(See separate strategy)	Claire Evans